



# House of Ruth Maryland

## Intimate Partner Violence: The Scope of the Problem

One in every four women will experience intimate partner violence in her lifetime.  
*(National Institute of Justice and the Center of Disease Control and Prevention, 2000)*

On average, more than three women are murdered by  
their husbands or boyfriends in this country every day.  
*(Bureau of Justice Statistics, 2006)*

Intimate partner violence calls are the single largest category of calls received by police.  
*(National Institute of Justice Special Report, June 2009)*

30% of the children in the U.S. live in homes with domestic violence.  
*(Journal of Family Psychology, 20, 137-142, 2006)*

Females who are 20-24 years of age are at the greatest risk for intimate partner violence.  
*(U.S. Department of Justice, Bureau of Justice Statistics, 2006)*

One in three teenagers report knowing a friend or peer who has been hit,  
punched, kicked, slapped, choked or physically hurt by their partner.  
*(Liz Claiborne, 2008)*

During one day in Maryland, 1,095 victims received services from domestic violence service providers.  
*(National Network to End Domestic Violence - Domestic Violence Counts,  
a 24-hour census of domestic violence shelters and services. September 16, 2015)*

## Our Mission

The House of Ruth Maryland leads the fight to end violence against women and their children  
by confronting the attitudes, behaviors and systems that perpetuate it, and by providing victims  
with the services necessary to rebuild their lives safely and free of fear.

United Way Agency No. 143  
America's Charity No. 52-11000236 • United Way National Capital Area No. 9416  
Combined Federal Campaign No. 75849



-over-

# What Began In 1977 As A Tiny Shelter Has Grown To Become The Most Comprehensive Intimate Partner Violence Program In Maryland Today.

## 24-Hour HotLine



410-889-RUTH (7884)

### Client Services



Emergency Shelter

Transitional Housing – Extended Stay

Dedicated Client Service Coordinators

Safety Planning



Health Clinic

Licensed Child Care

Life Skills Training

Assessment & Goal Planning

### Children & Youth

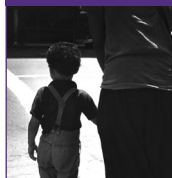


Clinical & Developmental Assessment

Therapeutic Services

Health Clinic

Safety Planning



Licensed Child Care

### Clinical Services



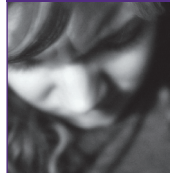
Group Counseling/ Support Groups



Individual Counseling Adults/Teens

Family Therapy

Domestically Violent Women's Program



### Legal Representation



Protective Order Representation

Divorce & Custody Representation

Criminal Court Accompaniment



Safety Planning

Legislative Advocacy

Systems Change



### Training Institute



Intimate Partner Violence Professional Training

Intimate Partner Violence Workplace Training



Presenter Certification Program (AIP/Teen)

Abuse Intervention Program

Community Education

### Adelante Familia



24-Hour Spanish Hotline

Victim Support Groups



Client Services Coordination

Emergency Food Assistance

Safety Planning

Advocacy and Community Outreach



Abuse Intervention Program



**House of Ruth Maryland**

2201 Argonne Drive • Baltimore, Maryland 21218-1627

**24-Hour Hotline:** 410-889-RUTH (7884) • **Administrative Office:** 410-889-0840 • **Línea en Español:** 410-889-7884 Oprimira 8

**www.hruth.org** • **Facebook:** facebook.com/houseofruthmaryland • **Twitter:** @houseofruthmd